

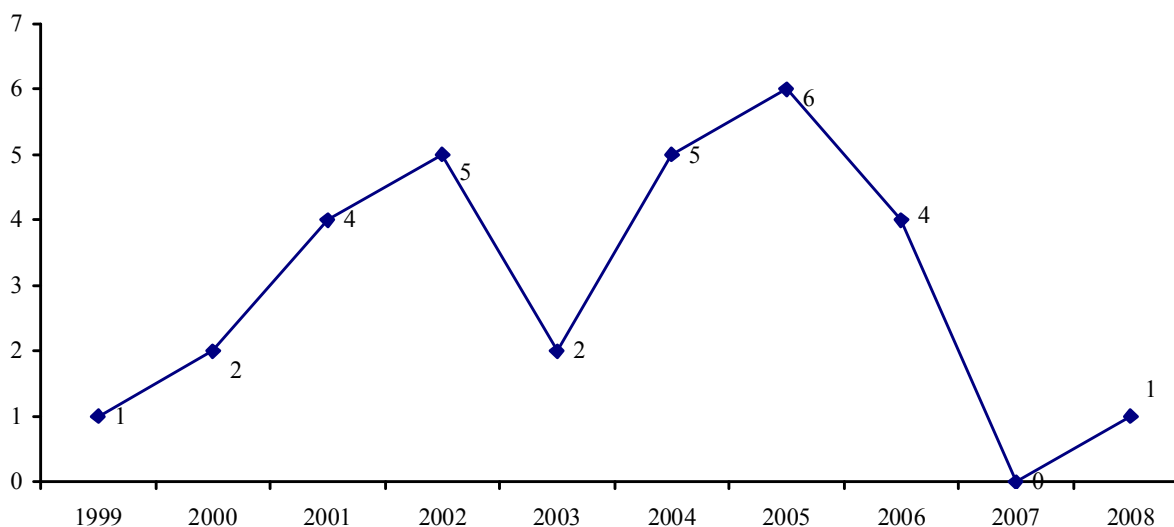


Non-College Units

Summary of Sponsored Research (Grants & Contracts)

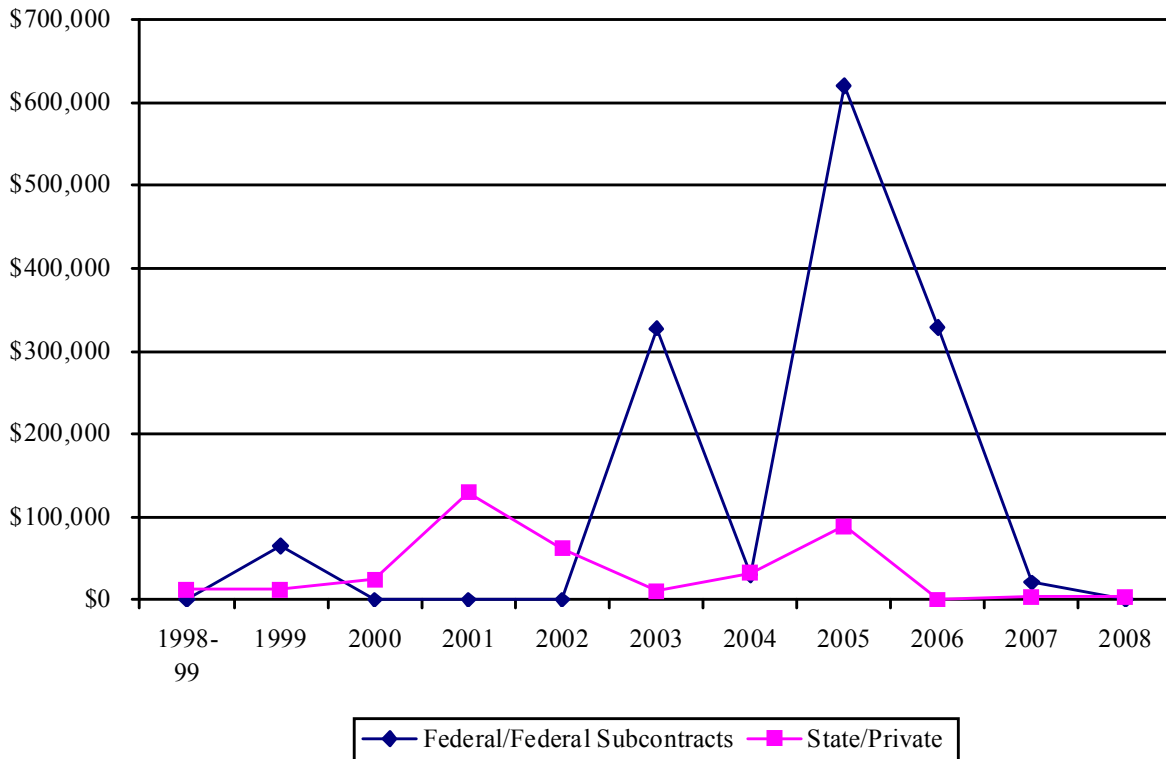
| Department | # of Proposals Submitted | # of Awards | Dollars Awarded |
|---|--------------------------|-------------|-----------------|
| Academic Internship | 0 | 0 | \$0 |
| Admissions & Records | 0 | 0 | \$0 |
| Associate Academic Vice President | 1 | 0 | \$0 |
| Center for Instructional Design | 0 | 0 | \$0 |
| Church Educational System | 0 | 0 | \$0 |
| Faculty Center | 0 | 0 | \$0 |
| General Education & Honors | 0 | 0 | \$0 |
| Harold B. Lee Library | 0 | 0 | \$0 |
| Information Technology Services | 0 | 0 | \$0 |
| Neal A. Maxwell Institute for Religious Scholarship | 0 | 0 | \$0 |
| Jacobsen Center | 0 | 0 | \$0 |
| Media Services | 0 | 0 | \$0 |
| Office of Research and Creative Activities | 0 | 6 | \$3,028 |
| Technology Transfer | 0 | 0 | \$0 |
| University Accessibility Center | 0 | 0 | \$0 |
| University Computing Services | 0 | 0 | \$0 |
| TOTALS | 1 | 6 | \$3,028 |

Proposals Submitted



External Research Funding (All Sources)

| Year | Grants/Contracts | | Total |
|------|------------------------------|---------------|-----------|
| | Federal/Federal Subcontracts | State/Private | |
| 1999 | \$64,875 | \$12,000 | \$76,875 |
| 2000 | \$0 | \$24,000 | \$24,000 |
| 2001 | \$0 | \$129,916 | \$129,916 |
| 2002 | \$0 | \$61,600 | \$61,600 |
| 2003 | \$327,250 | \$10,000 | \$337,250 |
| 2004 | \$30,000 | \$32,000 | \$62,000 |
| 2005 | \$620,500 | \$88,350 | \$708,850 |
| 2006 | \$328,500 | \$0 | \$328,500 |
| 2007 | \$20,718 | \$3,100 | \$23,818 |
| 2008 | \$0 | \$3,028 | \$3,028 |



Non-College Units 2008 Awards

| <u>PI</u> | <u>Sponsor</u> | <u>Title</u> | <u>Beg. Date</u> | <u>End Date</u> | <u>Amount</u> | <u>Type</u> |
|---|----------------|-----------------------|------------------|-----------------|---------------|-------------|
| <i>Office of Research & Creative Activities</i> | | | | | | |
| Garrett, Sandy | Lost Paws | Pre-vet Preceptorship | 1/1/2008 | 12/31/2008 | \$600 | 4 |
| Garrett, Sandy | Lost Paws | Pre-Vet Preceptorship | 1/1/2007 | 12/31/2008 | \$48 | 4 |
| Garrett, Sandy | Lost Paws | Pre-vet Preceptorship | 2/4/2008 | 12/31/2008 | \$600 | 4 |
| Garrett, Sandy | Lost Paws | Pre-vet Preceptorship | 1/1/2008 | 12/31/2008 | \$625 | 4 |
| Garrett, Sandy | Lost Paws | Pre-vet Preceptorship | 1/1/2008 | 12/31/2008 | \$500 | 4 |
| Garrett, Sandy | Lost Paws | Pre-Vet Preceptorship | 1/1/2008 | 12/31/2008 | \$30 | 4 |

Type: 1=Federal; 2=Federal Subcontract; 3=State; 4=Private

Department Totals

| | |
|---|----------------|
| Academic Internship | \$0 |
| Admissions & Records | \$0 |
| Associate Academic Vice President | \$0 |
| Center for Instructional Design | \$0 |
| Church Educational System | \$0 |
| Faculty Center | \$0 |
| General Education & Honors | \$0 |
| Harold B. Lee Library | \$0 |
| Information Technology Services | \$0 |
| Neal A. Maxwell Institute for Religious Scholarship | \$0 |
| Office of Research and Creative Activities | \$2,403 |
| Jacobsen Center | \$0 |
| Media Services | \$0 |
| Technology Transfer | \$0 |
| University Accessibility Center | \$0 |
| University Computing Services | \$0 |
| College Total: | \$2,403 |

Non-College Units

Source Breakdown of Grants and Contracts

| <u>Sponsor</u> | <u>Number Awarded</u> | <u>Total Amount</u> |
|---------------------|-----------------------|---------------------|
| Federal | | |
| None | | |
| <i>Total</i> | <hr/> | |
| Subcontracts | | |
| None | | |
| <i>Total</i> | <hr/> | |
| State | | |
| None | | |
| <i>Total</i> | <hr/> | |
| Private | | |
| Lost Paws | 6 | \$2,403 |
| <i>Total</i> | <hr/> 6 | <hr/> \$2,403 |