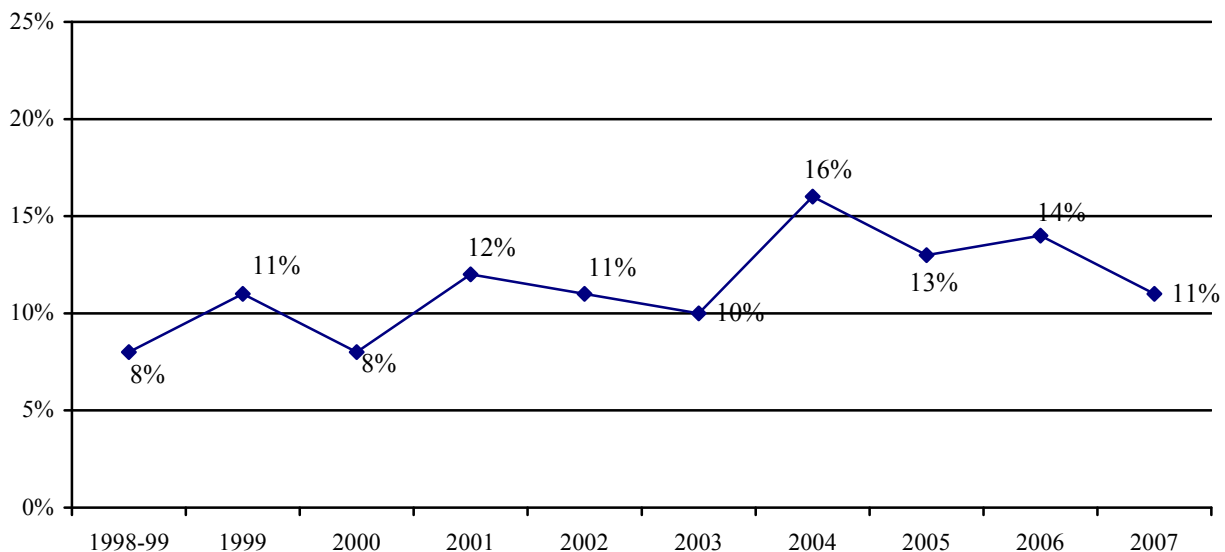


# College of Family, Home & Social Sciences

# Summary of Sponsored Research (Grants & Contracts)

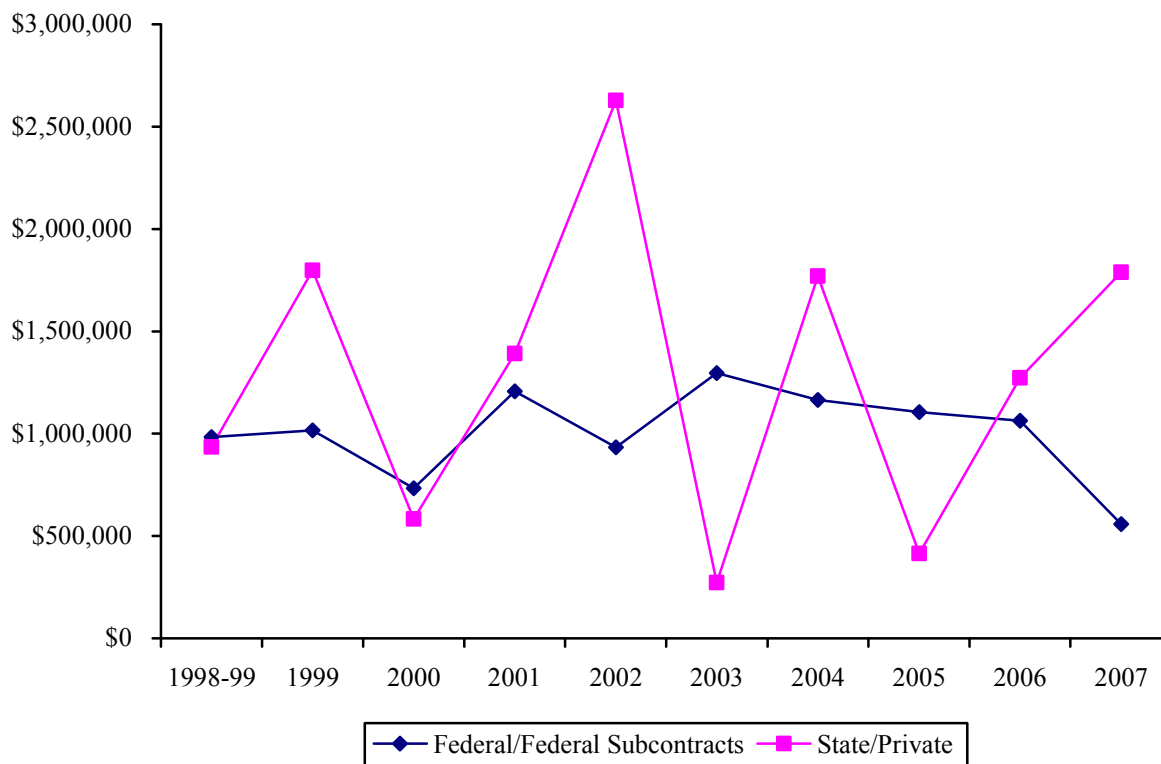
Department	# of Faculty	# of Faculty Submitting	# of Proposals Submitted	# of Awards	Dollars Awarded
Anthropology	9	2	1	4	\$24,650
Economics	23	3	1	2	\$176,606
Geography	13	0	0	0	\$0
History	40	0	0	0	\$0
School of Family Life	36	4	2	0	\$0
Museum of Peoples & Cultures	-	2	1	0	\$0
Office of Public Archaeology	-	1	3	17	\$1,343,825
Political Science	27	2	2	1	\$25,000
Psychology	31	4	5	15	\$742,616
Social Work	8	0	0	0	\$0
Sociology	19	2	1	5	\$34,085
Women's Research Institute	-	2	1	0	\$0
<b>TOTALS</b>	<b>206</b>	<b>22</b>	<b>17</b>	<b>44</b>	<b>\$2,346,782</b>

## Proposal Submission Activity



# External Research Funding (All Sources)

Year	Grants/Contracts		Total
	Federal/Federal Subcontracts	State/Private	
1998-99	\$982,698	\$935,497	\$1,918,195
1999	\$1,016,236	\$1,797,394	\$2,813,630
2000	\$733,017	\$582,613	\$1,315,630
2001	\$1,206,835	\$1,390,664	\$2,597,499
2002	\$932,566	\$2,627,620	\$3,560,186
2003	\$1,296,291	\$271,593	\$1,567,884
2004	\$1,164,878	\$1,769,103	\$2,933,981
2005	\$1,105,425	\$414,243	\$1,519,668
2006	\$1,063,435	\$1,272,255	\$2,335,690
2007	\$558,863	\$1,787,919	\$2,346,782



# Family, Home & Social Sciences 2007 Awards

<u>PI</u>	<u>Co-PI</u>	<u>Sponsor</u>	<u>Title</u>	<u>Start Date</u>	<u>End Date</u>	<u>Amount</u>
<i>Anthropology</i>						
Neilsen, Glenna		BOR	Curation Agreement (March 2007)	9/1/2006	12/4/2007	\$2,000
Nielsen, Glenna	w/Stavast, Paul	UT Office of Mus. Srvcs.	Kachina Cult Exhibition and Catalog (July 2007)	7/1/2007	6/1/2008	\$4,325
Stavast, Paul		BLM UT State Office	BLM UT State Curator Collections 2006-07	7/1/2006	6/30/2007	\$5,000
Stavast, Paul		BLM UT State Office	BLM UT State Curator Collections 2007-08	7/1/2007	6/30/2008	\$9,000
Stavast, Paul		UT Office of Mus. Srvcs.	Kachina Cult Exhibition and Catalog (July 2007)	7/1/2007	6/1/2008	\$4,325
<i>Economics</i>						
Butler, Richard		Luke Fndtn. (ASU)	Center for Health Infor & Research	09-01-06	12-31-06	\$60,000
Cardon, James		R. W. Johnson Fndtn.	Health Savings Accounts Policy Simulations	11/1/2007	12/31/2008	\$58,303
Showalter, Mark	w/Cardon, James	R. W. Johnson Fndtn.	Health Savings Accounts Policy Simulations	11/1/2007	12/31/2008	\$58,303
<i>Office of Public Archaeology</i>						
Talbot, Richard		Bighorn Archaeological Consultants	Jackson Flat Archaeological Project	9/1/2007	11/1/2007	\$20,000
Talbot, Richard		Creamer and Noble	Carbon County Fairgrounds Road	9/20/2007	12/31/2007	\$5,000
Talbot, Richard		RC&D (Washington County)	Fort Harmony Phase I Testing	10/10/2007	10/1/2008	\$4,000
Talbot, Richard		Bighorn Arch. Consultants LLC	Sand Hollow Resort Excavations	11/1/2006	12/31/2008	\$500,000
Talbot, Richard		Creamer & Noble Engineers	Carbon County Fairgrounds Road	9/20/2007	12/31/2007	\$5,000
Talbot, Richard		Natural Resources Con. Ser.	Karl Dean Sprinkler Project	1/7/2005	1/6/2010	\$4,733
Talbot, Richard		Natural Resources Con. Ser.	Goshute Tribal Springs	1/7/2005	1/6/2010	\$8,592
Talbot, Richard		Orem City	Orem Historic Preservation Survey	1/1/2007	1/1/2008	\$3,600
Talbot, Richard		UTA	UTA Commuter Rail Project, Archaeological Monitoring	7/28/2005	20/31/2010	\$65,000
Talbot, Richard		Rocky Mountain Power	Rocky Mountain Power Inventory	12-31-06	12-31-08	\$209,000
Talbot, Richard		Big Horn Archeologists	Sand Hollow Resort Excavations	11/1/2006	12/31/2008	\$400,000
Talbot, Richard		UVSC	Sleeping Rainbow Ranch Monitoring West Parks and Schools Connector Trail Project	8/5/2002	12/30/2020	\$1,500
Talbot, Richard		Spanish Fork City	Spanish Fork City Project	3/1/2007	6/1/2007	\$3,500
Talbot, Richard		Biowest (St of Utah)	Provo Westside Connector Project	3/15/07	12/31/2010	\$40,100
Talbot, Richard		Idaho Power	fHagerman Area Site Monitoring 2007	5/30/2007	12/31/2007	\$50,500
Talbot, Richard		Various Sources	Neuroimaging	4/30/1991	12/20/2010	\$3,300
Talbot, Richard		Bighorn Arch. Consultants LLC	Jackson Flat Archaeological Project	9/12/2007	11/1/2007	\$20,000
<i>Political Science</i>						
Davis, Richard		Carnegie (Knight Fdn)	The Political Influence of Blogosphere	11/1/2006	7/31/2007	\$25,000
<i>Psychology</i>						
Bigler, Erin		U of U (NIH)	Atypical Late Development in Autism: MRI & DTI	8/1/2007	7/31/2008	\$80,373
Bigler, Erin		Ohio St (NIH)	Social Outcomes in Pediatric Traumatic Brain Injury	7/1/2005	5/31/2008	\$82,142
Bigler, Erin		Various	Neuroimaging	4/30/1991	12/31/2010	\$2,475
Bigler, Erin		Various	Neuroimaging	4/30/1991	12/31/2010	\$18,250
Bigler, Erin		Various	Neuroimaging	4/30/1991	12/31/2010	\$9,900
Bigler, Erin		Various	Neuroimaging	4/30/1991	12/31/2010	\$7,438
Bigler, Erin		Various Sources	Neuroimaging	04-30-91	12-31-20	\$7,000
Bigler, Erin		Various Sources	Neuroimaging	04-30-91	12-31-20	\$3,000
Bigler, Erin		Various Sources	Neuroimaging	4/30/1991	12/31/2010	\$600
Bigler, Erin		Various Sources	Neuroimaging	4/30/1991	12/31/2010	\$3,000
Carpenter, Bruce		Utah Dept of Corrections	Utah State Prison, Clinical Svcs Prolonged Outcomes after Nitric Oxide (July 2007)	10/1/2004	9/30/2008	\$118,000
Hopkins, Ramona		U of Pitt (NIH)	Utah State Prison, Clinical Svcs Prolonged Outcomes after Nitric Oxide (July 2007)	12/1/2003	11/30/2007	\$12,000
Steffen, Patrick R.		American Heart Assoc	Cultural Change and Cardiovascular Disease	7/1/2004	6/30/2008	\$65,000

		Risk Mexican			
Steffensen, Scott	Univ of NM (NIMH)	Age Dependent Presynaptic action of pregnenolone sulfate	4/1/2005	1/31/2008	\$30,000
Steffensen, Scott C.	NIH NIAAA	Neuropharmacological Substrates of Alcohol Addiction	8/1/2007	7/31/2008	\$303,438
<i>Sociology</i>					
Ward, Carol	NSF-DKNRSI	Integrated Math and Sciences Curriculum Evaluation	10/1/2007	12/30/2007	\$3,720
Ward, Carol	Chief Dull Knife College (NSF)	Integrated Math and Science Curriculum Evaluation	10/1/2007	12/30/2007	\$3,720
Ward, Carol	Chief Dull Knife (NSF)	Integrated Math and Science Curriculum Evaluation	1/1/2008	8/30/2008	\$9,345
Ward, Carol	Provo School District	21st Century After School Program	12/1/2006	8/31/2007	\$6,800
Ward, Carol	Boys & Girls Club	Boys & Girls Club 21st Century After School Program	2/1/2007	6/15/2009	\$10,500

Type: 1=Federal; 2=Federal Subcontract; 3=State; 4=Private

Department Totals	
Anthropology	\$24,650
Economics	\$176,606
Geography	\$0
History	\$0
Home & Family Living	\$0
Joseph Fielding Smith Institute	\$0
Marriage & Family Therapy	\$0
Museum of Peoples & Cultures	\$0
Office of Public Archaeology	\$1,343,825
Political Science	\$25,000
Psychology	\$742,616
Social Work	\$0
Sociology	\$34,085
Women's Research Institute	\$0
<b>College Total:</b>	<b>\$2,346,782</b>

# Family, Home & Social Sciences Source Breakdown of Grants and Contracts

<b>Sponsor</b>	<b>No. Awarded</b>	<b>Amount</b>
<b>Federal Sponsors</b>		
BLM UT State Office	2	\$14,000
NIH NIAAA	1	\$303,438
<i>Totals</i>	3	
<b>Federal Subcontracts Sponsors</b>		
Chief Dull Knife College (NSF)	2	\$13,065
Natural Resources Con. Ser.	2	\$13,325
NSF-DKNRSI	1	\$3,720
Ohio St (NIH)	1	\$82,142
Provo School District	1	\$6,800
U of Pitt (NIH)	1	\$12,000
U of U (NIH)	1	\$80,373
Univ of NM (NIMH)	1	\$30,000
<i>Totals</i>	10	
<b>State Sponsors</b>		
Biowest (St of Utah)	1	\$40,100
BOR	1	\$2,000
Orem City	1	\$3,600
RC&D (Washington County)	1	\$4,000
Spanish Fork City	1	\$3,500
UT Office of Mus. Svcs.	1	\$8,650
UTA	1	\$65,000
Utah Dept of Corrections	1	\$118,000
UVSC	1	\$1,500
<i>Totals</i>	9	
<b>Private Sponsors</b>		
American Heart Assoc	1	\$65,000
Big Horn Archeologists	1	\$400,000
Bighorn Arch. Consultants LLC	3	\$540,000
Boys & Girls Club	1	\$10,500
Carnegie (Knight Fdn)	1	\$25,000
Creamer & Noble Engineers	2	\$10,000
Idaho Power	1	\$50,500
Luke Fndtn. (ASU)	1	\$60,000
R. W. Johnson Fndtn.	1	\$116,606
Rocky Mountain Power	1	\$209,000
Various Sources	9	\$54,963
<i>Totals</i>	22	\$2,346,782