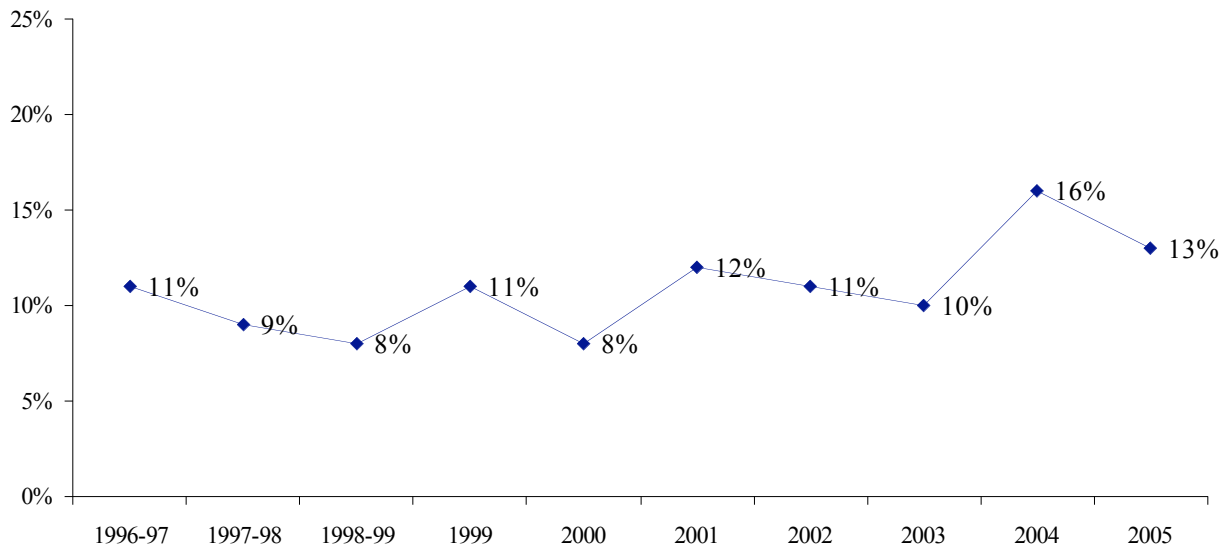


College of
Family,
Home &
Social
Sciences

Summary of Sponsored Research (Grants & Contracts)

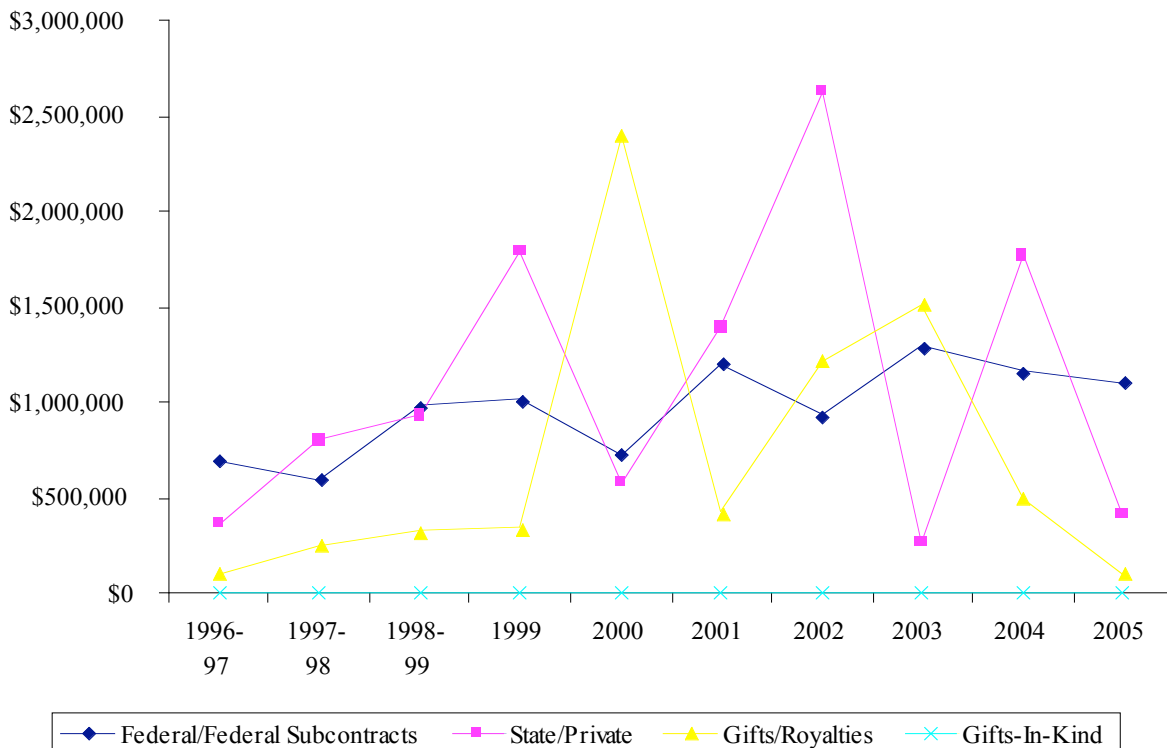
Department	# of Faculty	# of Faculty Submitting	# of Proposals Submitted	# of Awards	Dollars Awarded
Anthropology	13	2	3	2	\$121,002
Child & Family Studies Laboratories	3	0	0	0	\$0
Economics	23	1	1	0	\$0
Geography	11	4	3	2	\$2,038
History	36	1	1	1	\$124,400
Joseph Fielding Smith Institute	6	0	0	0	\$119,558
Museum of Peoples & Cultures	4	3	4	2	\$46,426
Office of Public Archaeology	3	1	5	6	\$121,456
Political Science	30	7	4	6	\$629,683
Psychology	32	2	7	15	\$327,606
School of Family Life	39	3	3	1	\$32,816
Social Work	12	1	1	2	\$66,048
Sociology	21	4	3	2	\$48,193
Women's Research Institute	3	3	3	0	\$0
TOTALS	236	32	38	37	\$1,519,668

Proposal Submission Activity



External Research Funding (All Sources)

Year	Grants/Contracts		Gifts/Royalties	Gifts-In-Kind	Total
	Federal/Federal Subcontracts	State/Private			
1996-97	\$694,627	\$367,881	\$105,455	\$0	\$1,167,963
1997-98	\$599,999	\$806,018	\$257,953	\$0	\$1,663,970
1998-99	\$982,698	\$935,497	\$331,166	\$0	\$2,249,361
1999	\$1,016,236	\$1,797,394	\$340,803	\$0	\$3,154,433
2000	\$733,017	\$582,613	\$2,400,367	\$0	\$3,715,997
2001	\$1,206,835	\$1,390,664	\$472,945	\$0	\$3,070,444
2002	\$932,566	\$2,627,620	\$1,224,696	\$0	\$4,784,882
2003	\$1,296,291	\$271,593	\$1,520,336	\$0	\$3,088,220
2004	\$1,164,878	\$1,769,103	\$497,025	\$0	\$3,431,006
2005	\$1,105,425	\$414,243	\$102,800	\$0	\$1,622,468



Family, Home & Social Sciences 2005 Awards

<u>PI</u>	<u>Co-PI</u>	<u>Sponsor</u>	<u>Title</u>	<u>Start Date</u>	<u>End Date</u>	<u>Type</u>	<u>Amount</u>	<u>N/C</u>
<i>Anthropology</i>								
Hawkins, John		NSF	Cultural Change and Continuity	4/1/2004	3/31/2006	1	\$10,850	C
Hawkins, John		NSF	Culture Change and Continuity	2/1/2003	3/31/2006	1	\$110,152	C
<i>Geography</i>								
Bekker, Matt		LDS Church	Dendrochronology of SL Tabernacle	4/15/2005	12/31/2010	4	\$2,038	N
<i>History</i>								
Granstaff, Mark		US Army War College	Faculty Assignment as Visiting Professor	7/1/2005	6/30/2006	1	\$124,400	N
<i>Museum of Peoples and Cultures</i>								
Allen, Marti		Inst Museum Lib Svcs	IMLS Pottery Treatment II	8/1/2005	3/31/2007	1	\$41,426	N
Allen, Marti		BLM Utah	Supplies and Services	7/1/2005	6/30/2006	1	\$5,000	N
<i>Office of Public Archaeology</i>								
Talbot, Richard		NPS	NPS Oxbow Survey	8/1/2005	9/30/2005	1	\$2,443	N
Talbot, Richard		Capital Reef N.P.	NPS Oxbow Survey	8/1/2005	9/30/2005	1	-\$2,443	C
Talbot, Richard		Capitol Reef Natl. Park	NPS Oxbow Survey	10/1/2005	9/30/2006	1	\$2,443	N
Talbot, Richard		Nat. Res. Conserv. (USDA)	Goshen Pipeline	3/1/2005	2/28/2006	2	\$5,000	N
Talbot, Richard		Div. of Oil, Gas & Mining	DOGM - San Rafael	6/15/2005	3/31/2006	3	\$39,491	N
Talbot, Richard		UTA	TRAX - West Valley to Mid Jordan	3/25/2004	3/24/2005	3	\$24,522	C
Talbot, Richard		UTA	UTA Commuter Rail Project Archaeological Monitoring	7/28/2005	1/31/2006	3	\$50,000	n
<i>Political Science</i>								
Bowen, Donna Lee		Dept of State/CAORC	Academic Program in North Africa	8/24/2001	8/31/2005	2	\$50,000	C
Jacoby, Wade		Dept of Educ	Western Europe NRC and FLAS	8/15/2003	8/14/2006	1	\$230,000	C
Jacoby, Wade		DOE	Western Europe FLAS	8/15/2003	8/14/2006	1	\$175,500	C
Magleby, David		Carnegie Corp.	Financing the 2004 Election	12/1/2004	11/30/2005	4	\$50,000	N
Magleby, David		JEHT Foundation	Assessing Reform: Financing the 2004 Election	12/1/2004	11/30/2005	4	\$25,000	N
Nielson, Dan		NSF	Analyzing Development Furnace	2/1/2005	1/31/2008	1	\$99,183	N
<i>Psychology</i>								
Bigler, Erin		U of Utah (NIH)	Neuroimaging Autism	6/1/2004	5/31/2006	2	\$58,914	C
Bigler, Erin		Various Sources	Neuroimaging Account		open	4	\$21,000	C
Bigler, Erin		Various Sources	Neuroimaging	4/1/1991	12/31/2010	4	\$2,500	C
Bigler, Erin		Various Sources	Neuroimaging	4/30/1991	4/29/2010	4	\$1,000	C
Bigler, Erin		Various Sources	Neuroimaging	4/30/1991	4/29/2010	4	\$3,200	C
Bigler, Erin		Various Sources	Neuroimaging	4/30/1991	4/29/2010	4	\$1,375	C
Bigler, Erin		Various Sources	Neuroimaging	4/30/1991	12/30/2010	4	\$5,050	C
Bigler, Erin		Various Sources	Neuroimaging	4/30/1991	1/30/2010	4	\$6,150	C
Bigler, Erin		Various Sources	Neuroimaging	4/30/1991	12/31/2020	4	\$1,500	C
Bigler, Erin		Various Private Sponsors	Neuroimaging	4/30/1991	12/31/2010	4	\$16,037	C
Bigler, Erin		Ira Fulton	Traumatic Head Injury and Pediatric Hydrocephalus	1/1/2000	12/30/2010	4	\$50,190	C
Bigler, Erin		Ira Fulton	Traumatic Head Injury and Pediatric Hydrocephalus	1/1/2000	12/31/2020	4	\$50,190	C
Hopkins, Ramona		Univ of Pitts (NIH)	Prolonged Outcomes after Nitric Oxide	12/1/2003	11/30/2005	2	\$8,000	C
Steffen, Patrick		American Heart Assn	Cardiovascular Disease Risk Factors in Mexican Americans	7/1/2004	6/30/2005	4	\$65,000	N
Steffensen, Scott		Univ New Mexico (NIH)	Age Dependent Presynaptic Action of Prenenolone Sulfate	4/1/2005	1/31/2006	2	\$37,500	N
<i>School of Family Life</i>								
Hawkins, Alan		NCFR (DHHS)	Healthy Marriage Resource Center	8/1/2004	1/31/2006	2	\$16,409	C
Larson, Jeff	w/ Hawkins, Alan	NCFR (DHHS)	Healthy Marriage Resource Center	8/1/2004	1/31/2006	2	\$16,407	C

Sociology

Heaton, Tim	w/ Hawkins, Alan	NCFR (DHHS)	Healthy Marriage Resource Center	8/1/2004	1/31/2006	2	\$16,407	C
Ward, Carol		Provo School Dist (DOEd)	21st Century Program of Provo School Districts	6/20/2005	6/30/2005	1	\$31,786	N
Social Work Cox, Shirley		Univ Nev Reno (DHHS)	Nevada Rural Interdisciplinary Grant Program	7/1/2005	6/30/2006	2	\$52,328	N
Ward, Carol		Chief Dull Knife (NSF)	Chief Dull Knife College NSF TCUP Evaluation	11/21/2005	9/30/2006	2	\$13,720	C

Type: 1=Federal; 2=Federal Subcontract; 3=State; 4=Private N/C: N=New; C=Continuing

Department Totals

Anthropology	\$121,002
Economics	\$0
Geography	\$2,038
History	\$124,400
Joseph Fielding Smith Institute	\$0
Marriage & Family Therapy	\$0
Marriage, Family & Human Dev.	\$0
Museum of Peoples & Cultures	\$46,426
Office of Public Archaeology	\$121,456
Political Science	\$629,683
Psychology	\$327,606
School of Family Life	\$32,816
Social Work	\$66,048
Sociology	\$48,193
College Total:	\$1,519,668

Family, Home & Social Sciences Source Breakdown of Grants and Contracts

Sponsor	Number Awarded	Total Amount
Federal		
BLM Utah	1	\$5,000
Dept of Education	2	\$405,500
Inst. Museum Lib. Services	1	\$41,426
NPS	1	\$2,443
NSF	3	\$220,185
Provo School District (DOE)	1	\$31,786
US Army War College	1	\$124,400
Total	10	\$830,740
Subcontracts		
Chief Dull Knife College	1	\$13,720
Dept. of State/CAORC	1	\$50,000
Nationat Res. Conservation (USDA)	1	\$5,000
NCFR	1	\$49,223
Univ. of Mexico (NIH)	1	\$37,500
Univ. of Nevada-Reno (DHHS)	1	\$52,328
Univ. of Pittsburgh	1	\$8,000
Univ. of Utah (NIH)	1	\$58,914
Total	8	\$274,685
State		
Div. of Oil, Gas, & Mining	1	\$39,491
UTA	2	\$74,522
Total	3	\$114,013
Private		
American Heart Association	1	\$65,000
Carnegie Corp.	1	\$50,000
Ira Fulton	2	\$100,380
JEHT Foundation	1	\$25,000
LDS Church	1	\$2,038
Various Sources	9	\$57,812
Total	15	\$300,230