

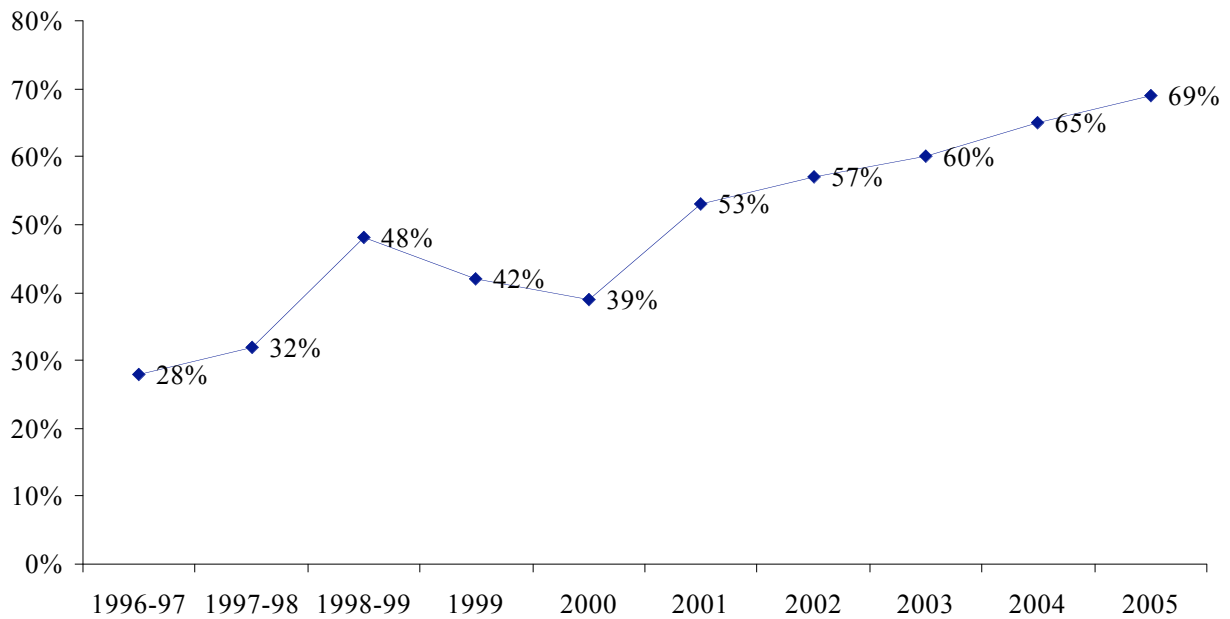


College of
Biology
&
Agriculture

Summary of Sponsored Research (Grants & Contracts)

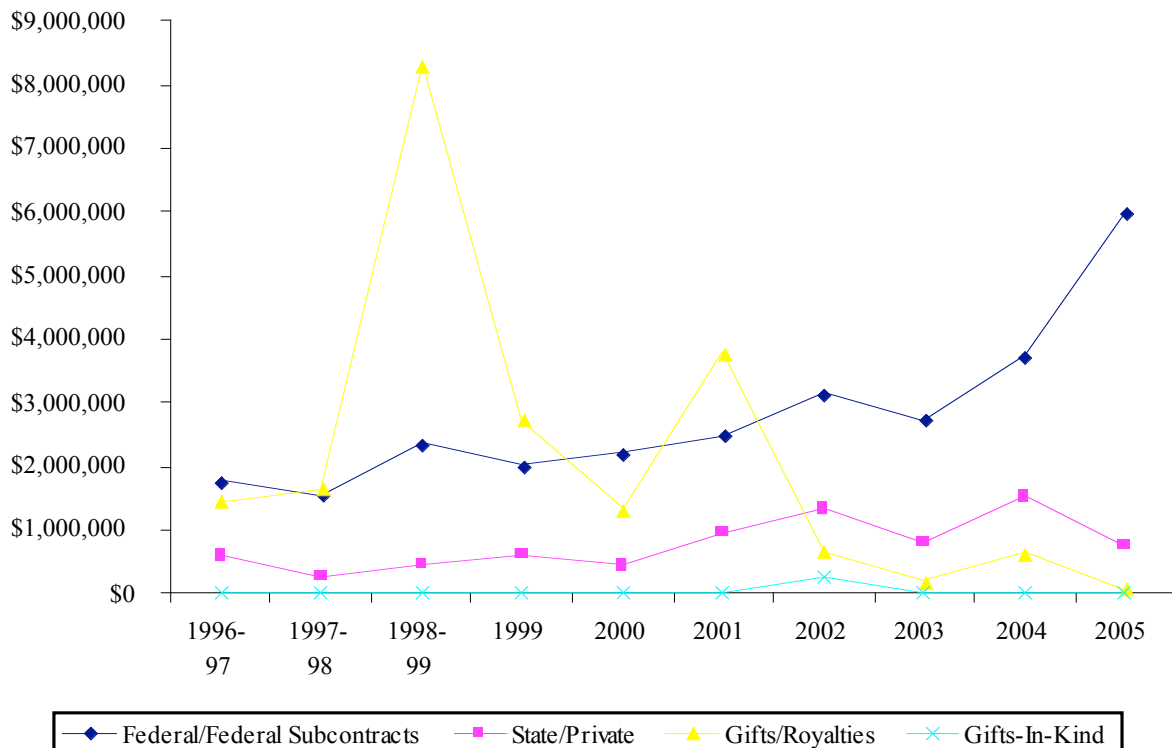
Department	# of Faculty	# of Faculty Submitting	# of Proposals Submitted	# of Awards	Dollars Awarded
Bean Museum	3	0	0	0	\$0
Integrative Biology	37	42	52	55	\$4,341,101
Microbiology & Molecular Biology	19	12	12	16	\$1,239,666
Nutrition, Dietetics & Food Science	15	4	4	12	\$120,200
Physiology & Developmental Biology	17	10	17	6	\$778,937
Plant & Animal Science	18	8	9	8	\$250,238
TOTALS	109	76	94	93	\$6,730,142

Proposal Submission Activity



External Research Funding (All Sources)

Year	Grants/Contracts		Gifts/Royalties	Gifts-In-Kind	Total
	Federal/Federal Subcontracts	State/Private			
1996-97	\$1,763,717	\$600,668	\$1,456,474	\$0	\$3,820,859
1997-98	\$1,547,816	\$264,232	\$1,643,295	\$0	\$3,455,343
1998-99	\$2,370,292	\$471,857	\$8,318,486	\$0	\$11,160,635
1999	\$2,010,191	\$616,711	\$2,729,011	\$0	\$5,355,913
2000	\$2,218,777	\$447,877	\$1,318,477	\$0	\$3,985,131
2001	\$2,484,780	\$958,960	\$3,796,391	\$0	\$7,240,131
2002	\$3,144,951	\$1,331,910	\$652,762	\$255,000	\$5,384,623
2003	\$2,734,614	\$805,898	\$200,259	\$0	\$3,740,771
2004	\$3,744,218	\$1,525,364	\$638,435	\$0	\$5,908,017
2005	\$5,974,159	\$755,983	\$75,746	\$0	\$6,805,888



College of Biology and Agriculture 2005 Awards

<u>PI</u>	<u>Co-PI</u>	<u>Sponsor</u>	<u>Title</u>	<u>Start Date</u>	<u>End Date</u>	<u>Type</u>	<u>Amount</u>	<u>N/C</u>
<i>Integrative Biology</i>								
Allpin-Woolstenhulme, Loreen		Forest Service	Draba asterophora	7/27/2005	12/30/2005	1	\$5,500	N
Anderson, Val		US Army (Dugway)	Dugway ITAM project	4/30/2004	9/30/2006	1	\$13,800	C
Anderson, Val	w/Roundy, Bruce	USDA Forest Service	Strategies and methodologies for diversifying created wheatgrass stands	7/8/2004	9/30/2006	1	\$15,000	C
Anderson, Val		USDA Forest Service	Evaluations on the affect of flower and seed predation....	8/18/2005	9/30/2006	1	\$19,000	N
Anderson, Val		Dugway Proving Grounds	Dugway ITAM Project	9/1/2004	9/30/2006	1	\$50,000	C
Anderson, Val		Uncompahgre/Com, Inc	Effects of plant Spacing and Irrigation Timing on Seed Production	9/1/2004	8/31/2014	4	\$41,625	N
Atwood, Duane		BLM-Dept of Interior	Floristic Study of Rich County, Utah....	8/10/2005	5/30/2007	1	\$6,000	N
Atwood, Duane		BLM	Pollination Study of native Reseating	9/20/2005	12/31/2007	1	\$15,000	N
Belk, Mark		UT State Dept of Natural Resources	Growth and Survival of Young June Suckers	6/1/2005	12/31/2006	3	\$33,200	C
Belk, Mark		DWR	Growth and Survival of Young June Suckers	7/1/2002	12/31/2007	3	\$33,200	C
Belk, Mark		DWR	Heritability of Morphological Variation	6/1/2005	12/31/2006	3	\$36,850	C
Black, Hal		UT State Div of Wildlife Resources	Black Bear Reproduction	4/15/2004	12/31/2005	3	\$11,520	N
Black, Hal		UT Dept of Natural Resources	Distribution of Small Mammals in the Eastern Great Basin...	6/2/2005	5/31/2006	3	\$27,428	C
Cameron, Stephen		NSF	Testing Utility of Mitochondrial Genome Rearrangements	3/1/2005	2/29/2008	1	\$150,000	N
Crandall, Keith	w/ Whiting, Michael	NSF	Biocomplexity: Hexapod Phylogenomics; REU Supplement	1/1/2002	12/31/2006	1	\$2,400	C
Crandall, Keith		NSF	Systematics and Evolution of Barnacles	4/18/2005	8/31/2006	1	\$101,090	N
Crandall, Keith		NSF	Systematics and Evolution of Barnacles	3/18/2005	8/31/2005	1	\$12,000	C
Crandall, Keith		NSF (RET)	RET	5/4/2005	8/31/2006	1	\$20,000	N
Crandall, Keith		NSF	Collaborative Research ATOL	9/15/2005	8/31/2006	1	\$118,130	N
Crandall, Keith	w/Johnson, Jerry	NSF	Speciation in Patagonia	10/1/2005	9/30/2008	1	\$312,319	N
Crandall, Keith		Johns Hopkins (NIH)	Molecular Epidemiology of N Gonorrhoeae	5/1/2002	2/28/2006	2	\$116,112	C
Crandall, Keith		Arkansas Game & Fish Commission	Status and Genetic of Procamburus ferrugenus	2/15/2005	8/31/2005	3	\$8,000	C
Crandall, Keith		PhRMA Foundation	Sabbatical Fellowship in Informatics	8/1/2005	7/31/2005	4	\$40,000	N
Crandall, Keith		US-Israel Binational Science Foundation	Systematics and Phylogeography of Chthamalus Barnacles	10/1/2005	9/30/2006	4	\$11,500	N
Evans, Paul	w/ Shiozawa, Dennis	Montana Fish, Wildlife & Parks	Sculpin Genetics	7/1/2005	9/30/2006	3	\$5,000	N
Flinders, Jerran		GSLR&DC (USDA)	NRCS Pygmy Rabbit Study	5/17/2005	5/16/2006	2	\$70,876	N
Flinders, Jerran		Utah reclamation Mitigation and Conservation Commission		7/1/2005	6/30/2006	3	\$90,000	C
Flinders, Jerran		State of Utah DWR	Joint Completion of Wildlife Conservation Manuscripts	3/1/2005	2/28/2006	3	\$13,436	N
Flinders, Jerran		UT Dept of Natural Resources	Pygmy Rabbit and Sagebrush	6/1/2005	5/31/2006	3	\$60,000	N
Flinders, Jerran	w/Randy Larson	UT DNR	Scientific research study on Guzzlers and Chukar Partridge.	8/19/2005	6/30/2006	3	\$19,943	N
Flinders, Jerran		Various Private Sources	Wildlife Population Dynamics	4/14/2005	12/31/2010	4	\$3,000	C
Flinders, Jerran		Pershing County Chukars	Chukar Study	2/8/2005	2/28/2006	4	\$2,500	N
Flinders, Jerran		Nevada Chukar Fdn.	Chukar Study	2/8/2005	4/7/2006	4	\$10,000	C
Flinders, Jerran		Utah Chukar	Benefits Impacts and Proper Spacing...	6/27/2005	6/26/2006	4	\$2,000	C

		Foundation						
Flinders, Jerran		WWF	Benefits Impacts and Proper Spacing...	6/27/2005	6/26/2006	4	\$5,000	C
Flinders, Jerran		Various Private	Chuckar Partridge Research	2/8/2005	8/30/2006	4	\$5,500	C
Hanegan, Nikki	w/Crandall, Keith	NSF	Collaborative Research ATOL	9/15/2005	8/31/2006	1	\$118,130	N
Hanegan, Nikki		UT State Office of Ed (ED)	Secondary Science Core Academy	2/22/2005	4/30/2006	2	\$95,878	N
Johnson, Jerald		Utah DWR	Effects of Historical an Contemporary Fragmentation on Speciation....	7/1/2005	6/30/2006	3	\$15,660	N
Johnson, Jerry		NSF	Speciation in Patagonia	10/1/2005	9/30/2008	1	\$312,321	N
Johnson, Leigh		NSF	Phylogenetic and Evolutionary Inferences; REU	1/15/2004	12/31/2006	1	\$6,000	C
Johnson, Leigh		NSF	MRI: Acquisition of DNA-manipulation robotics....	8/1/2005	7/31/2008	1	\$67,502	N
Johnson, Leigh	w/Johnson, Jerry	NSF	Speciation in Patagonia	10/1/2005	9/30/2008	1	\$312,319	N
Johnson, Robert	w/Anderson, Val	USDA Forest Service	Evaluations on the affect of flower and seed predation....	8/18/2005	9/30/2006	1	\$19,000	N
Larson, Randy		UT DNR	Scientific research study on Guzzlers and Chukar Partridge.	8/19/2005	6/30/2006	3	\$19,943	N
Miller, Kelly		NSF	Collaborative Research: Phylogeny, Behavior and Silk Evolution of Webspinners.	9/1/2005	8/31/2006	1	\$15,260	N
Moon, Katie	w/Atwood, Duane	BLM-Dept of Interior	Floristic Study of Rich County, Utah....	8/10/2005	5/30/2007	1	\$6,000	N
Peck, Steven		USDA	Contributions to a framework for managing insect resistance	1/7/2004	8/31/2007	1	\$25,000	C
Peck, Steven		USDA	Movement of Bactrocera dorsalis in Hawaiian agrocossystems	9/24/2001	9/23/2006	1	\$20,000	N
Raymer, Danny	w/ Flinders, Jerran	Various Private Sources	Wildlife Population Dynamics	4/14/2005	12/31/2010	4	\$3,000	C
Rogers, Duke		NSF	Systematic Biology and Bioinformatics Research Experience	2/25/2005	7/31/2006	1	\$75,000	C
Roundy, Bruce		USDA Forest Service	Strategies and methodologies for diversifying created wheatgrass stands	7/8/2004	9/30/2006	1	\$15,000	C
Roundy, Bruce		USGS-Dept of Interior	A regional experiment to evaluate fire....	7/29/2005	5/22/2005	1	\$486,484	N
Shiozawa, Dennis		Utah DWR	Genetic Analysis of Cutthroat Trout	11/1/2003	6/30/2005	3	\$2,000	C
Shiozawa, Dennis		Montana Fish, Wildlife& Parks	Sculpin Genetics	7/1/2005	9/30/2006	3	\$5,000	N
Shiozawa, Dennis		Yellowstone Park Fndn.	Temporal Genetic Structure of Spawning Populations...	5/9/2005	8/1/2006	4	\$13,000	N
Sites, Jack		NSF	REU Supplement: Physogeny of the Lizard Family	6/1/2002	5/31/2006	1	\$6,000	C
Sites, Jack		NSF	Resolving Squamate Phylogeny	1/1/2004	21/31/05	1	\$6,000	C
Sites, Jack		NSF	Resolving Suamate Phylogency...	5/31/2005	12/31/2006	1	\$123,688	N
Sites, Jack	w/Johnson, Jerry	NSF	Speciation in Patagonia	10/1/2005	9/30/2008	1	\$312,319	N
St. Clair, Larry		Forest Service	Air Quality and soil erosion monitoring program in the Uintas	8/12/2005	2/28/2007	1	\$14,963	N
Welsh, Stanley	w/Atwood, Duane	BLM-Dept of Interior	Floristic Study of Rich County, Utah....	8/10/2005	5/30/2007	1	\$6,000	N
White, Clayton		BLM-Dept of Interior	Mountain Plover Monitoring	7/30/2005	12/31/2010	1	\$10,000	N
Whiting, Michael		NSF	Biocomplexity: Hexapod Phylogenomics; REU Supplement	1/1/2002	12/31/2006	1	\$2,400	C
Whiting, Michael	w/Cameron, Stephen	NSF	Testing Utility of Mitochondrial Genome Rearrangements	3/1/2005	2/29/2008	1	\$150,000	N
Whiting, Michael	w/Johnson, Leigh	NSF	MRI: Acquisition of DNA-manipulation robotics....	8/1/2005	7/31/2008	1	\$67,500	N
Whiting, Michael	w/Miller, Kelly	NSF	Collaborative Research: Phylogeny, Behavior and Silk Evolution of Webspinners.	9/1/2005	8/31/2006	1	\$15,259	N
Whiting, Michael		NSF	ATOL: Collaborative Proposal: Assembling the Beetle Tree	10/1/2005	9/30/2007	1	\$399,991	N
Whiting, Michael	w/Wood Stephen	USDA Forest Service	Bark and Ambrosia Beetles of South America	8/31/2005	9/30/2007	1	\$9,000	N
Whiting, Michael		Univ of Georgia (NSF)	Building Taxanomic Expertise...	9/19/2005	12/31/2006	1	\$83,145	C

Wood, Stephen		USDA Forest Service	Bark and Ambrosia Beetles of South America	8/31/2005	9/30/2007	1	\$9,000	N
Woolstenhulme, Loreen Allphin		Mt Rose Development Co.	Ecological and genetic variation within and among populations of Drabab asterophora.	7/1/2005	12/31/2005	4	\$6,410	N
Microbiology and Molecular Biology								
Adams, Byron		USDA	Phylogeography, molecular evolution and the historical response of Antarctic Dry	8/1/2005	7/31/2007	1	\$321,000	N
Bridgewater, Laura		NIH	Chondrocyte-specific Transcriptional Regulation	8/1/2005	7/31/2006	1	\$163,338	C
Buhay, Jennifer	w/ Crandall, Keith	NSF	Evolutionary History and Current Gene Flow of Subterranean Crayfish	6/16/2005	5/31/2007	1	\$5,110	N
Crandall, Keith		NIH	Phylogenetics and Recombination	7/1/2005	6/30/2006	1	\$113,002	C
Crandall, Keith		NSF	Evolutionary History and Current Gene Flow of Subterranean Crayfish	6/16/2005	5/31/2007	1	\$5,110	N
Evans, Paul	w/ Shiozawa, Dennis	Utah DWR	Genetic Analysis of Cutthroat Trout	11/1/2003	6/30/2005	3	\$2,000	C
Jensen, James		U of U (NIH)	Antimalarial Properties of Papuan Plants	9/25/2003	4/30/2005	2	\$37,000	C
Nielsen, Brent		NIH	Mitochondrial DNA Recombination Proteins in Arabidopsis	2/1/2003	8/31/2008	1	\$109,125	C
Robison, Richard		DOE	Select Agent Archive	1/1/2000	12/31/2003	1	\$125,000	C
Robison, Richard		USAMRAA	Select Agent Archive	9/30/2005	9/30/2006	1	\$160,000	N
Robison, Richard		Solutions BioMed Inc.	Antimicrobial Materials and Select Agents	6/17/2005	12/31/2006	4	\$5,250	N
Baumann, Richard		Dept of Army (Dugway)	Tiger Beetles	5/1/2005	10/31/2005	2	\$5,000	C
Clark, Shawn	w/ Bauman, Richard	Dept of Army (Dugway)	Tiger Beetles	5/1/2005	10/31/2005	2	\$5,000	C
Adams, Byron		USDA	Trait deterioration in entomopathogenic nematodes:	6/1/2005	9/30/2006	1	\$23,356	N
Bridgewater, Laura	w/Johnson, Leigh	NSF	MRI: Acquisition of DNA-manipulation robotics....	8/1/2005	7/31/2008	1	\$67,500	N
Crandall, Keith	w/Johnson, Leigh	NSF	MRI: Acquisition of DNA-manipulation robotics....	8/1/2005	7/31/2008	1	\$67,500	N
Jensen, James		Univ of Utah (NIH)	Antimalarial Properties of Papuan Plants	5/1/2005	8/30/2005	2	\$9,375	C
Robison, Richard		USAMRIID	30 day preliminary account	8/15/2005	9/15/2005	1	\$16,000	N
Nutrition, Dietetics and Food Science								
Dunn, Michael		SUSTAIN	Fortification of Nixtamal Tortillas	5/15/2004	12/31/2005	4	\$24,000	N
Ogden, Lynn		BAF	Amendment #18 between BAF and BYU	11/1/2002	12/31/2005	4	\$2,000	C
Ogden, Lynn		BAF	Consumer Acceptance	4/18/2005	12-331-10	4	\$5,200	N
Ogden, Lynn		BAF	Consumer Acceptance	5/18/2005	12/31/2005	4	\$9,000	N
Ogden, Lynn		BAF	Consumer Taste Preferences	6/24/2005	12/31/2010	4	\$2,000	C
Ogden, Lynn		LDS Welfare Svcs.	Sensory Tests	6/3/2005	12/31/2010	4	\$8,000	C
Ogden, Lynn		BAF	Consumer Taste Preferences	11/1/2002	12/31/2005	4	\$2,000	C
Ogden, Lynn		BAF	Consumer Taste Preferences	1/1/2000	10/30/2006	4	\$3,300	C
Verl								
Steele, Frost		Deseret Meats	Pathogen Analysis for Meat Products	4/1/1989	Open	4	\$26,500	C
Dunn, Michael		SUSTAIN	Fortification of Nixtamal Tortillas	5/15/2004	12/30/2005	4	\$17,000	C
Ogden, Lynn		BAF	Consumer Taste Preferences	11/20/2002	12/31/2010	4	\$14,800	C
Ogden, Lynn		BAF	Consumer Taste Preferences	11/20/2002	12/31/2010	4	\$6,400	C
Plant and Animal Sciences								
Allen, Phil		USDA Forest Service	Developing Container Propagation Protocols	7/7/2004	9/30/2007	1	\$25,000	C
Coleman, Craig		Umcompaghre (USGS)	Genotyping of Cheatgrass	5/1/2005	12/31/2010	2	\$2,870	N
Coleman, Craig	w/Nielsen, Brent	NIH	Mitochondrial DNA Recombination Proteins in Arabidopsis	2/1/2003	8/31/2008	1	\$109,125	C
Coleman, Craig	w/ Maughn, Peter	Ministry of Ag. Bolivia	Genetic Improvement of Quinoa	2/1/2005	10/31/2007	4	\$3,402	C

Fairbanks, Dan	w/ Maughn, Peter	Ministry of Ag. Bolivia	Genetic Improvement of Quinoa	2/1/2005	10/31/2007	4	\$3,402	C
Geary, Bradley	w/ Maughn, Peter	Ministry of Ag. Bolivia	Genetic Improvement of Quinoa	2/1/2005	10/31/2007	4	\$3,402	C
Jellen, Eric	w/ Maughn, Peter	Ministry of Ag. Bolivia	Genetic Improvement of Quinoa	2/1/2005	10/31/2007	4	\$3,402	C
Jolly, Von	w/ Maughn, Peter	Ministry of Ag. Bolivia	Genetic Improvement of Quinoa	2/1/2005	10/31/2007	4	\$3,402	C
Maughn, Jeff		Bolivian Ministry of Agriculture	Genetic Improvement of Quinoa	2/1/2005	1/31/2007	4	\$10,000	N
Maughn, Peter		Bolivian Ministry of Agriculture	Genetic Improvement of Quinoa	2/1/2005	10/31/2007	4	\$3,406	C
Stevens, Mikel	w/ Maughn, Peter	Bolivian Ministry of Agriculture	Genetic Improvement of Quinoa	2/1/2005	10/31/2007	4	\$3,402	C
Terry, Richard		Penn State (NSF)	Re-evaluation of Earthworks at Tikal, Guatemala	2/15/2005	1/31/2007	2	\$12,000	C
Terry, Richard		Penn State (NSF)	Re-evaluation of Earthworks at Tikal, Guatemala	2/15/2005	1/31/2007	2	\$12,932	C
Webb, Bruce		USGS	Soil Analysis	4/15/2003	9/30/2005	1	\$54,493	C
<i>Physiology and Developmental Biology</i>								
Bell, John		NIH	Action of Phosphospholipase A2 on Apoptotic Cells	4/1/2005	3/31/2008	1	\$112,500	N
Busath, David		Florida State (NIH)	Function and Structure of Gramicidin	3/1/2005	2/28/2006	2	\$66,644	C
Judd, Alan	w/Bell, John	NIH	Action of Phosphospholipase A2 on Apoptotic Cells	4/1/2005	3/31/2008	1	\$112,500	N
Porter, James		American Heart Assn.	Mechanisms of Fetal Programming of Hypertension by Maternal High-Salt Diet.	7/1/2005	6/30/2006	4	\$70,000	N
Stark, Michael		NIH (Preliminary)	Genes Regulating Neurogenesis in the Trigeminal Placode	6/21/2005	9/20/2005	1	\$20,000	N
Stark, Michael		NIH	genes Regulating Neurogenesis	7/26/2005	4/30/2006	1	\$209,500	C
Winder, Will		NIH	Physiology of Malonyl-CoA in Muscle During Exercise	9/1/2005	8/31/2006	1	\$187,793	C

Type: 1=Federal; 2=Federal Subcontract; 3=State; 4=Private N/C: N=New; C=Continuing

Department Totals

Integrative Biology	\$4,341,101
Microbiology & Molecular Biology	\$1,239,666
Nutrition, Dietetics & Food Science	\$120,200
Physiology & Developmental Biology	\$778,937
Plant & Animal Science	\$250,238
Bean Museum	\$0
College Total:	\$6,730,142

Biology & Agriculture

Source Breakdown of Grants and Contracts

Sponsor	Number Awarded	Total Amount
Federal		
BLM	3	\$43,000
DOE	1	\$125,000
Dugway Proving Grounds, Army	2	\$63,800
Forest Service	2	20,463
NIH	7	\$1,136,883
NSF	17	\$2,933,993
USAMRAA	1	\$160,000
USAMRIID	1	\$16,000
USDA Forest Service	4	\$111,000
USDA	4	\$389,356
USGS	2	\$540,977
Total	44	\$5,540,472
Subcontracts		
Dept. of Army (Dugway)	1	\$10,000
Florida State U (NIH)	1	\$66,644
GSLR&DC (USDA)	1	\$70,876
Johns Hopkins (NIH)	1	\$116,112
Penn State (NSF)	2	\$24,932
U of U (NIH)	2	\$46,375
Umcompaghre (USGS)	1	\$2,870
UT State Office of Education (ED)	1	\$95,878
Total	10	\$433,687
State		
Arkansas Game and Fish Comission	1	\$8,000
DWR	2	\$70,050
Montana Fish and Wildlife Parks	1	10,000
State of Utah DWR	1	\$13,436
UT Dept. Natural Resources	3	\$111,204
UTRMCC	1	\$81,200
Utah DWR	7	\$357,700
UT State Division of Wildlife Services	1	\$11,520
Total	12	\$383,180
Private		
American Heart Association	1	\$70,000
BAF	8	\$57,200
Bolivian Ministry of Agriculture	2	\$33,818
Deseret Meats	1	\$26,500
LDS Welfare Services	1	\$8,000

Biology & Agriculture Source Breakdown of Grants and Contracts

Sponsor	Number Awarded	Total Amount
Nevada Chuckar Foundation	1	\$10,000
Pershing County Chuckars	1	\$2,500
PhRMA Foundation	1	\$40,000
Solutions BioMed Inc.	1	\$5,250
SUSTAIN	2	\$41,000
Tetracore Inc.	1	\$5,460
Uncompahgre/com, Inc.	1	\$41,625
US-Israel Binational Science Foundation	1	\$11,500
Utah Chuckar Foundation	1	\$2,000
Various Private Sources	1	\$2,500
WWF	1	\$5,000
Yellowstone Park Foundation	1	\$13,000
Total	27	\$372,803